

Enhancements

to your natural gas system in Hinsdale

Investing in Illinois: A Nicor Gas System Improvement Initiative is a multi-year initiative to modernize aging natural gas infrastructure. Nicor Gas, with its contractor NPL, will be modernizing the system that delivers natural gas safely and reliably to your neighborhood and we want to keep you informed of our work. Highlighted below are the major steps involved in the project that we will soon be starting in your neighborhood.

Inspect Sewers

Sewer inspections are part of Nicor Gas' safety practices. If your sewer service is not accessible from the street, NPL, a Nicor Gas contractor will schedule an appointment to inspect the sewer line from inside your property. There will be no interruption to your natural gas or sewer service during the inspection. Vital information from the inspection will be marked on lawns and sidewalks with spray paint.

Identify New Meter Location & Utilities

Nicor Gas will contact you to schedule an appointment to locate your existing natural gas line and natural gas meter. We will identify where the new meter(s) will be placed outside of your property, if applicable, and locate your existing natural gas line. Any obstruction (drywall, furniture, enclosures) must be removed before the appointment so we can access your natural gas piping.

During this step, water, sewer, electric and cable utilities will also be located and identified with spray painted markings and colored flags. It is important that these markings always remain visible for your safety. Private utility lines, such as sprinkler systems, are your responsibility to identify and mark at the time other utilities are marked.

For Your Safety

These improvements are part of the Natural Gas Consumer, Safety & Reliability Act and costs are recovered under the Qualified Infrastructure Charge. All Nicor Gas employees and contractors will have Nicor Gas, AGL Resources or Southern Company Gas-issued ID cards and will present them if requested. The Nicor Gas contractors working on this project are NPL and UMI.

Install the Natural Gas Main & Natural Gas Line

Nicor Gas' contractor, NPL, will install a new natural gas main in your neighborhood and will also install a new natural gas line that connects your property to the natural gas main. Utilities may again be marked with spray paint and flags.

Connect the System & Retire Facilities

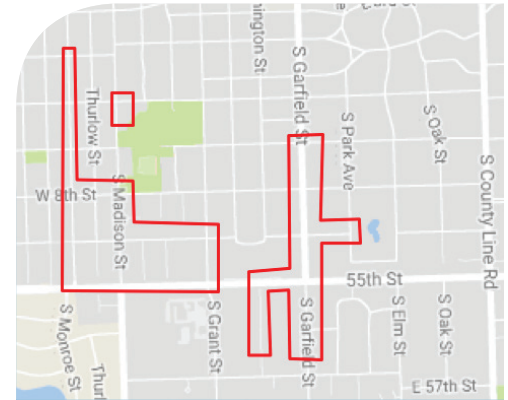
Nicor Gas' contractor, UMI, will contact you to schedule an appointment to move your natural gas meter outside and reconfigure your inside piping. Your natural gas will remain off for approximately three hours. If there is more than one meter, the process may take longer. As a safety measure, we will remove or seal the retired natural gas line at the point it enters your property.

Restore Landscaping & Pavement

We understand that you value the appearance of your property. Nicor Gas will restore landscaping and paving impacted by our construction to the condition in which we found it. Temporary restoration of some areas may be necessary until permanent restoration can be completed.

Our Commitment

We take great care in implementing construction practices that limit disturbances and we understand your time is valuable. We appreciate your understanding and thank you for allowing us to continue to provide you with safe and reliable natural gas service.



Areas Affected

- 28 – 40 E. 55th St.
- 544 W. 6th St.
- 601 W. 7th St.
- 401 – 424 8th Place
- 106 E. 8th St.
- 532 W. 8th St.
- 24 & 119 – 130 E. 9th St.
- 122 – 545 W. 9th St.
- 904 – 937 Allmen Ave.
- 5504 – 5522 S. Garfield Ave.
- 730 – 946 S. Garfield Ave.
- 906 – 945 S. Grant St.
- 601 & 801 – 954 S. Madison St.
- 419 – 944 S. Monroe St.
- 803 – 941 S. Thurlow St.
- 903 – 948 S. Vine St.
- 5500 – 5601 S. Washington St.

Questions?

Project Related

Dean Wirtz: 331.212.2186
 dwirtz@southernco.com

Landscaping & Paving

Pat Loftus: 224.229.2882
 PLoftu1@southernco.com

For more information
nicorgas.com/WorkInYourNeighborhood
630.388.3333
G2investinginillinois@southernco.com